



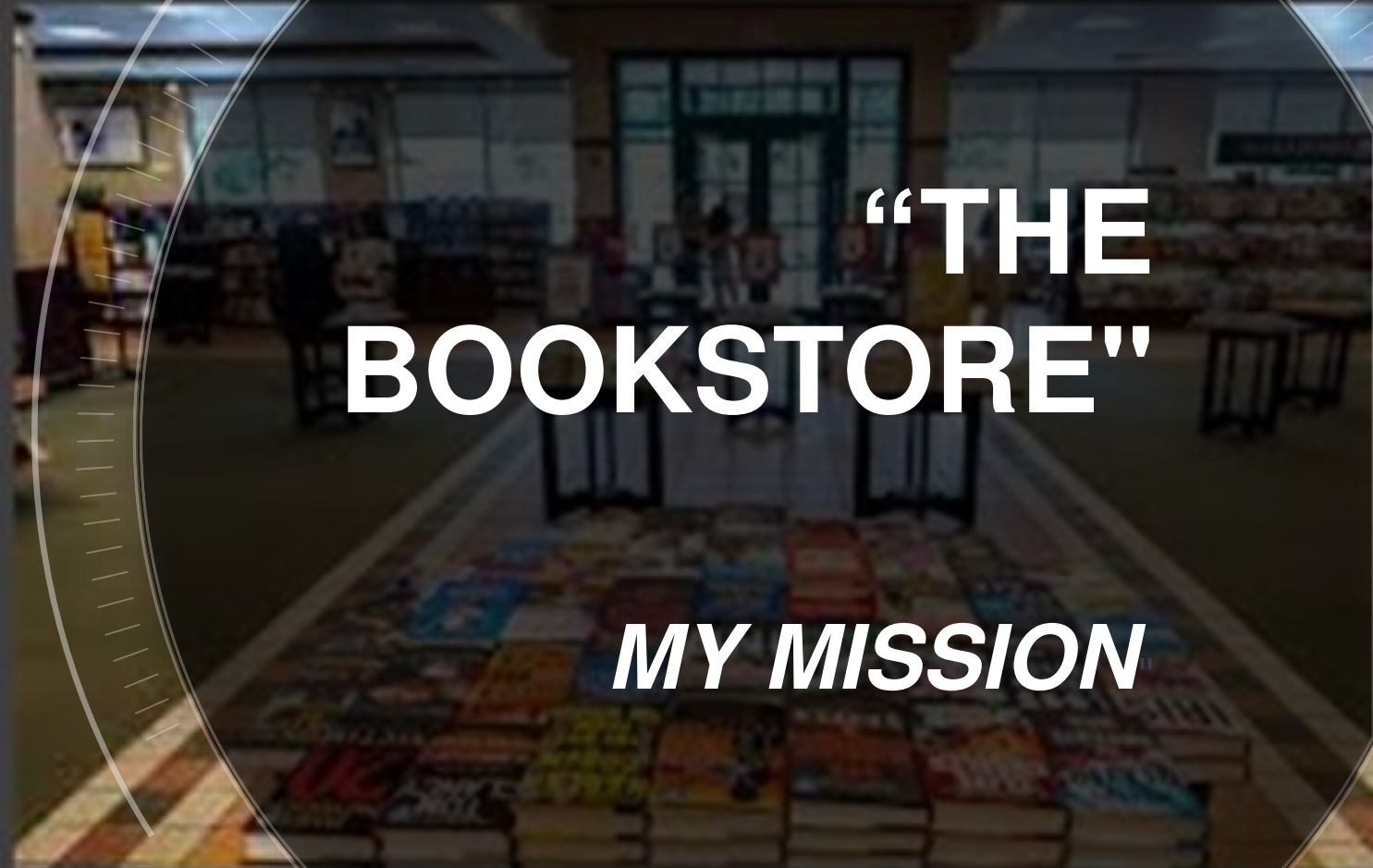
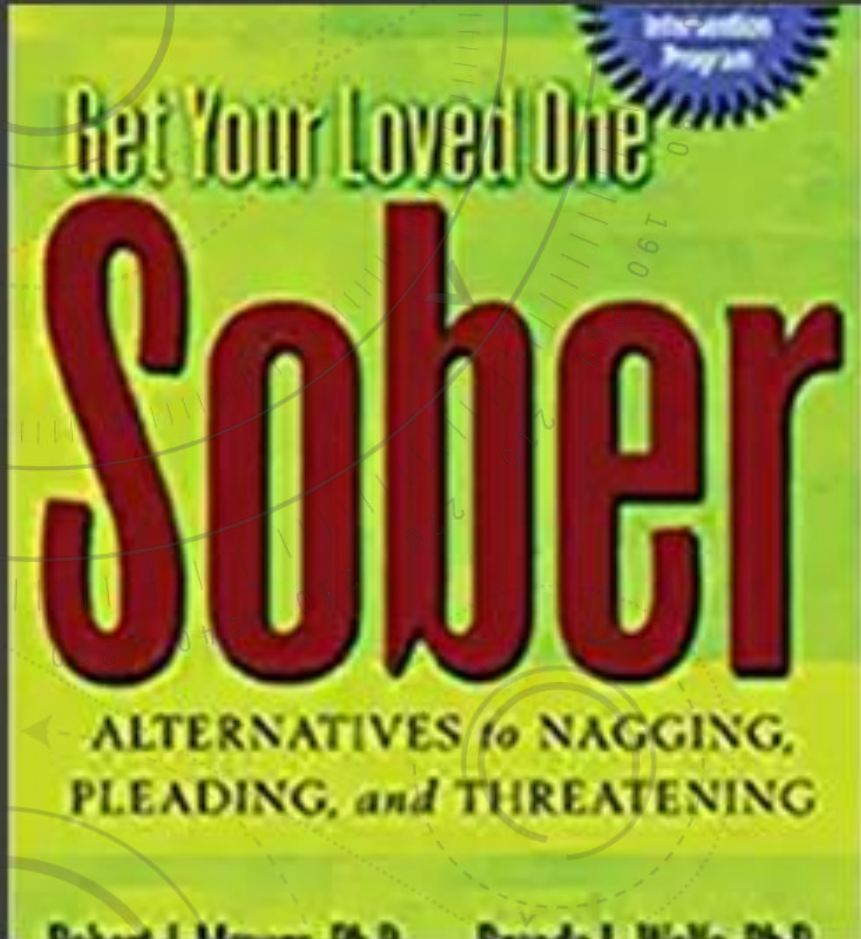
“RECOGNIZE, RESPOND & REFER”

"FAMILY MATTERS"

ELIZABETH A. DELANEY, DNP



BARNES AND NOBLE
MOMENT



**“THE
BOOKSTORE”**

MY MISSION

SEEKING RESOURCES



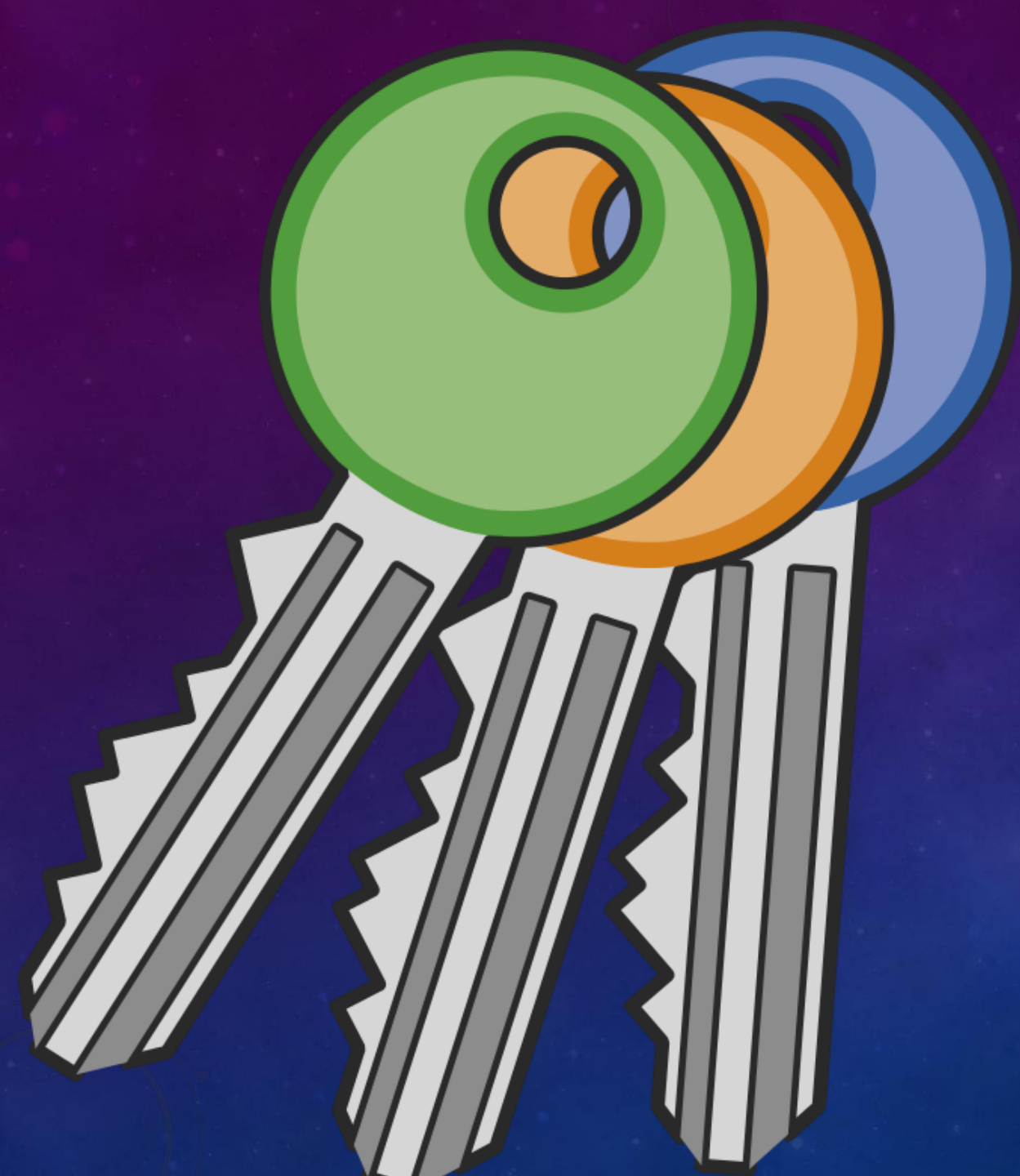
***A NEW
PERSPECTIVE
"COURAGE TO CHANGE"***



TREATMENT? – WHY, WHERE, WHAT?

NAVIGATION

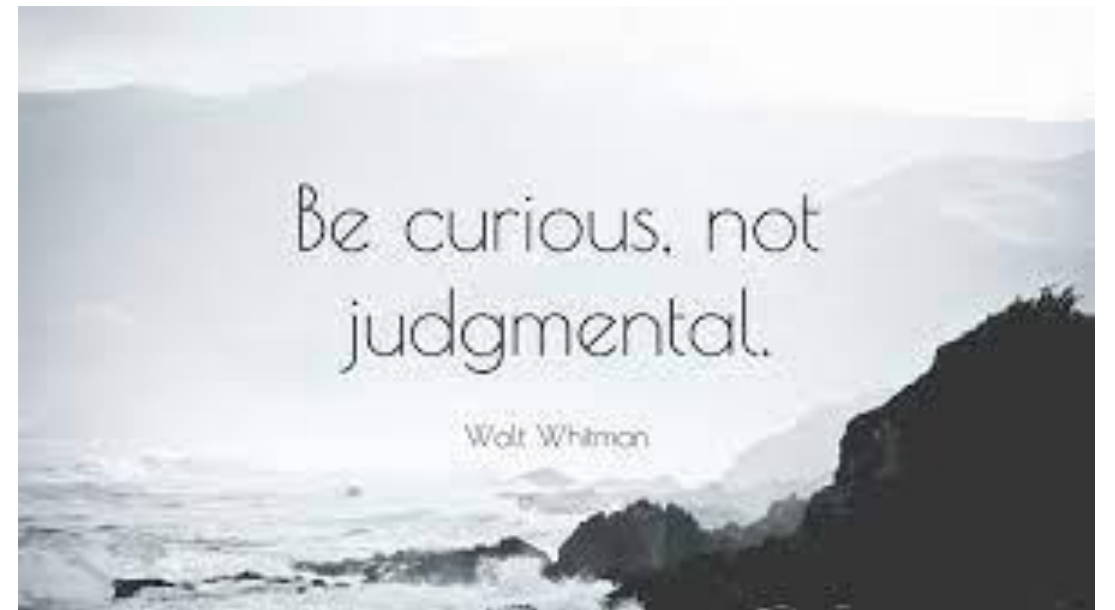




3 KEYS

- AUD's treatability
- Available support
- Access to self-care

EMPOWER CHANGE

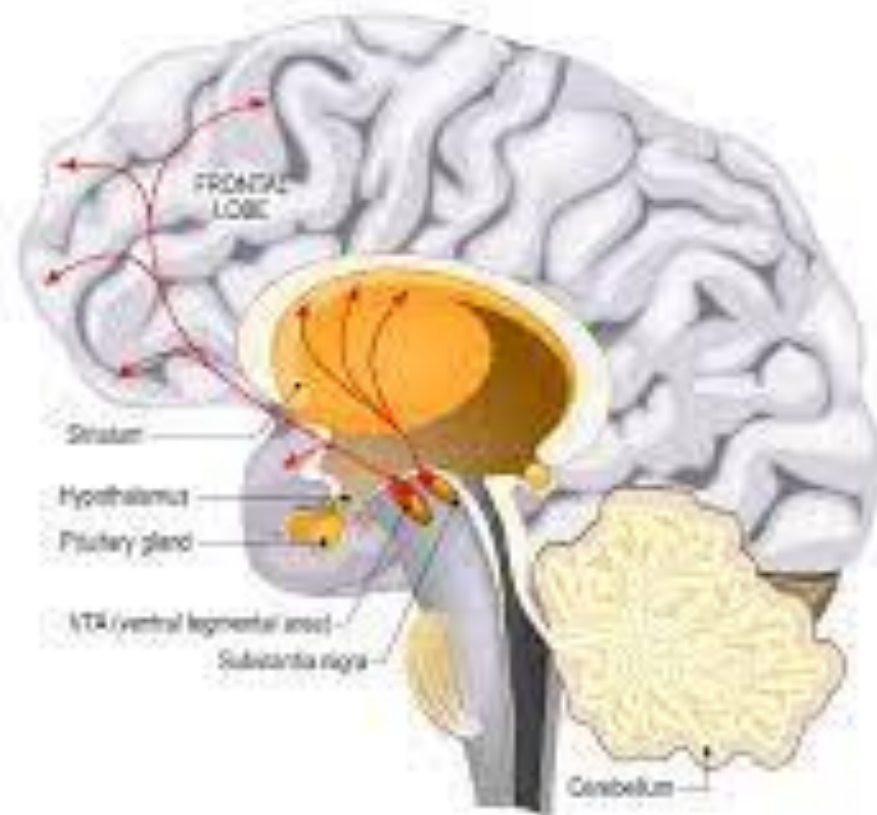


CHANGES IN THE BRAIN AND NEUROPLASTICITY

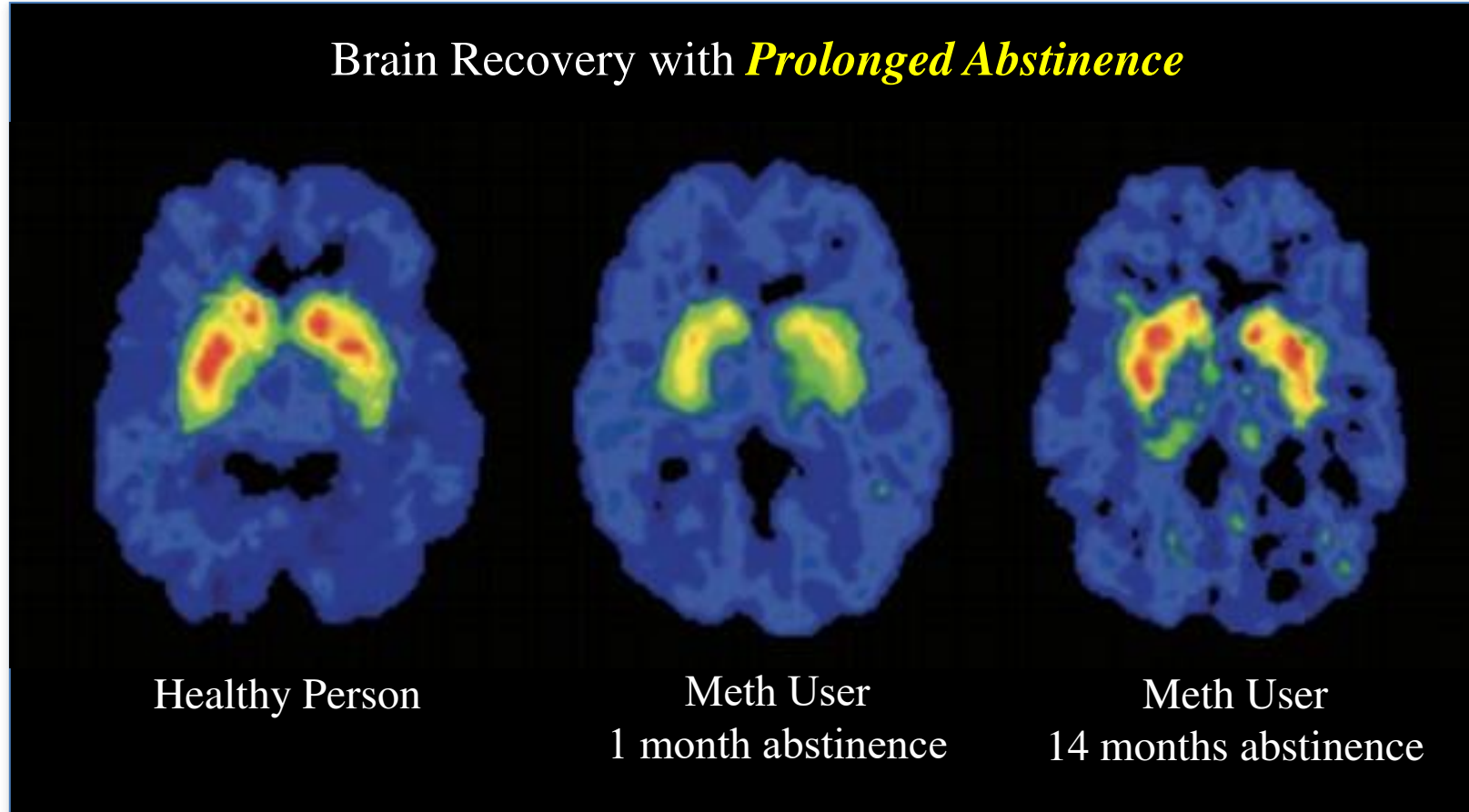


BRAIN AND SUBSTANCE USE

DOPAMINE PATHWAY



The Brain Can Recover

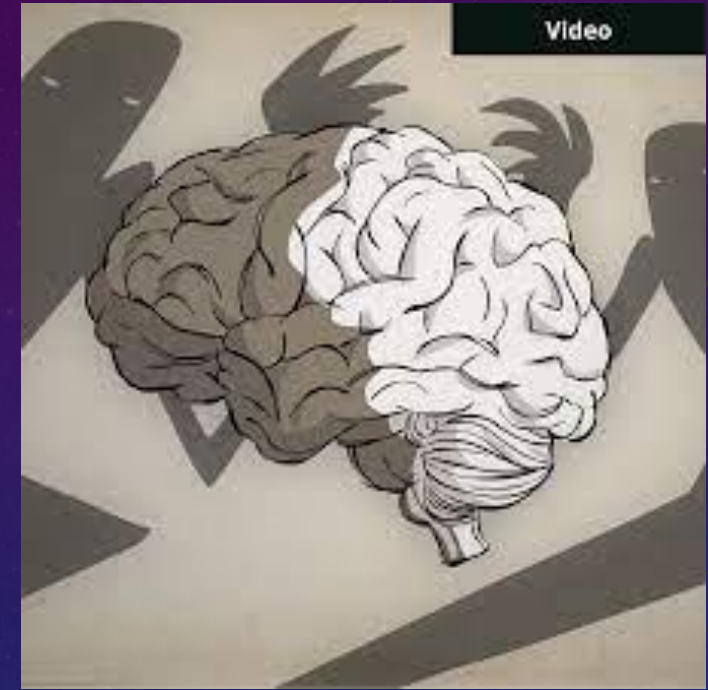


*Adapted from NIDA (2014) *Drugs, Brains, and Behavior: The Science of Addiction*

TRUSTED PARTNERS



- Addiction Policy Forum



HIJACKER

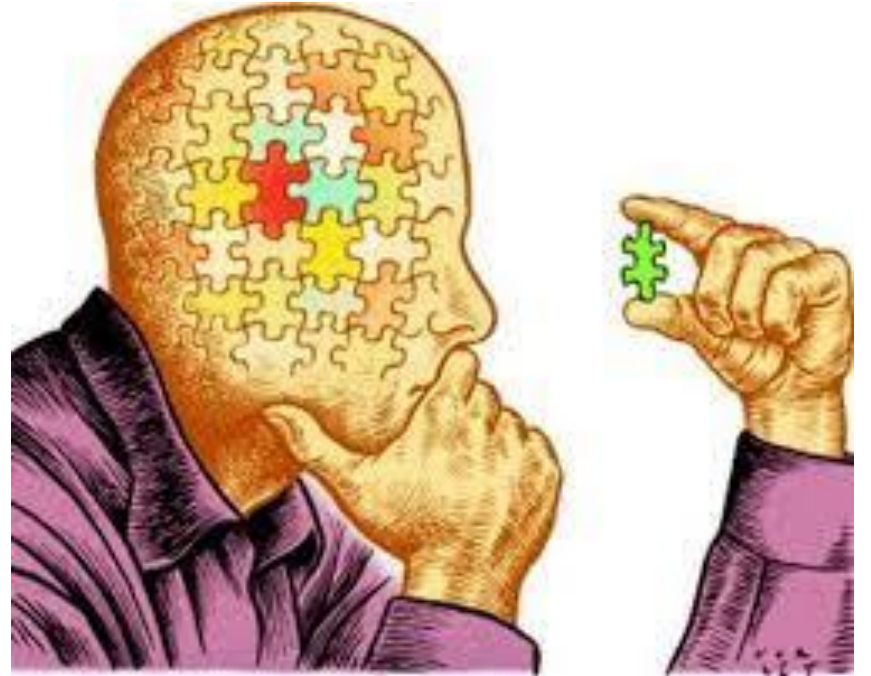
<https://www.youtube.com/@addictionpolicyforum/featured>



NEUROPLASTICITY

THINK YOU CAN CHANGE?

POSITIVE AND NEGATIVE
INFLUENCE



**DR. CAROLINE
LEAF**

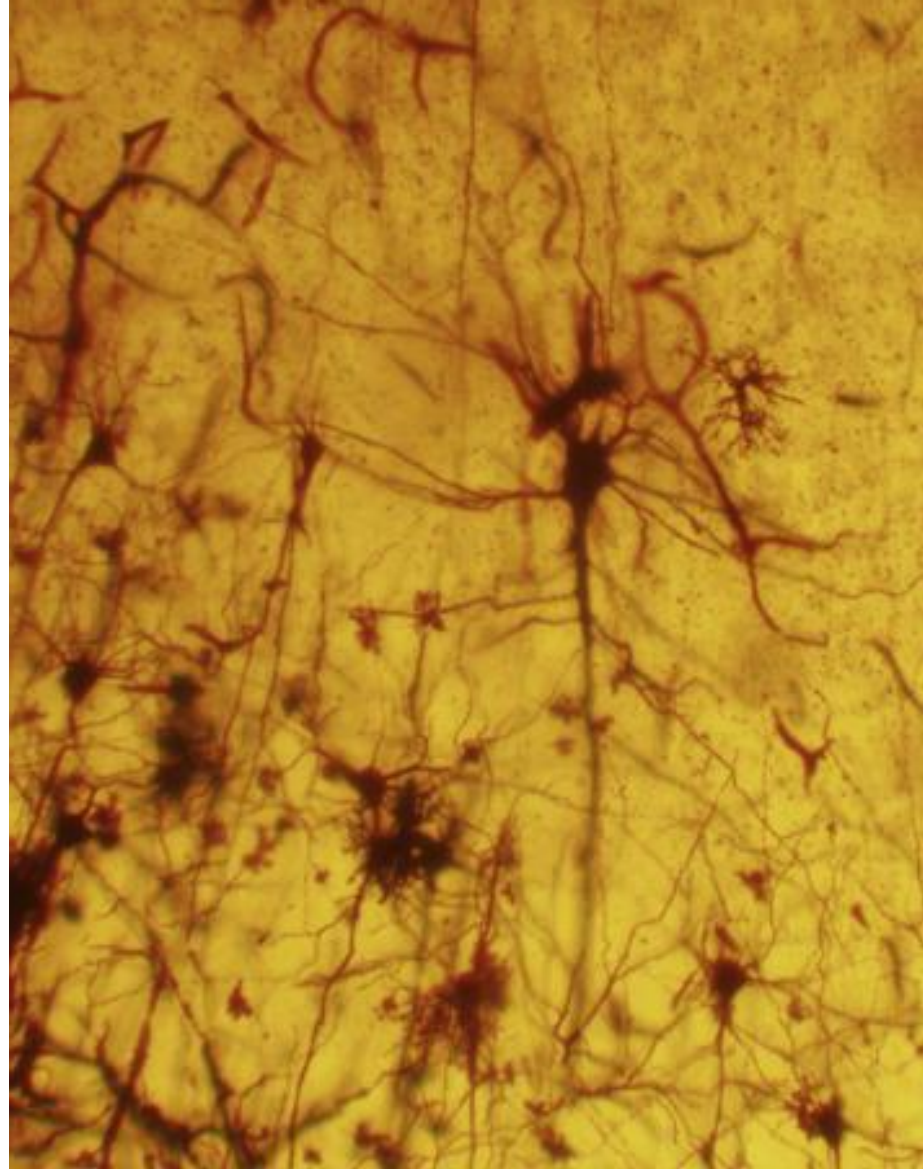
***SIMPLE
EXPLANATIONS FOR
COMPLEX TOPICS.***



Dr. Caroline Leaf...

- Thoughts are located in 3 different places:
 - In your brain
 - In your mind
 - In the cells of your body





A THOUGHT



The branches and leaves represent our conscious thinking

The tree trunk represents the subconscious level—the emotional, informational, and physical warning signals

A thought has three types of memories:

Informational memories

Emotional/feeling memories

Physical memories

EMBRACING HOPE AND HEALING



**"HOLISTIC
APPROACH: BODY,
MIND, AND SPIRIT"**

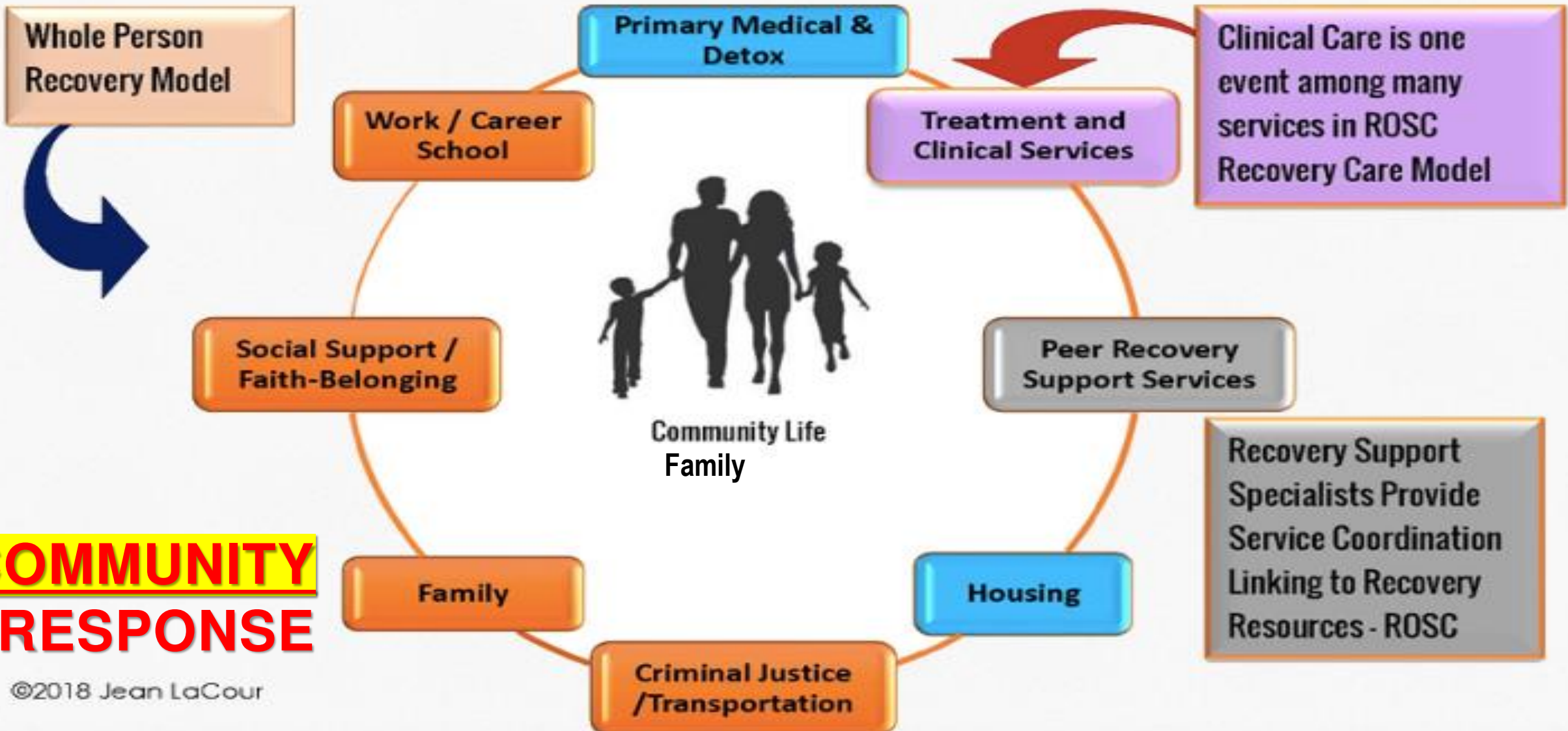
***HOLISTIC CARE AND
ITS IMPORTANCE.***



Body, Mind, and SPIRIT

“Studies Have Shown That ***Spirituality and Religion Can Play a Role in How an Individual Adult or Child Copes*** with Being Sick, May Influence Medical Decisions that are Made, and May Have an Impact on the Medical Outcome.”

— *Georgetown Univ. National Center for Cultural Competence*



COMPLEX PROBLEMS NEED **COMPREHENSIVE** SOLUTIONS!

SAMHSA

HOLISTIC

“characterized by comprehension of the parts of something as intimately interconnected and explicable only by reference to the whole.”



HOLISTIC HISTORY

NURSING

COMMANDMENT BRINGS CLARITY

- Matthew 22:37 Jesus replied: “Love the Lord your God with all **your heart** and with all **your soul** and with all **your mind.**’
- Mark 12:30 Love the Lord your God with all **your heart** and with all **your soul** and with all **your mind** and with all **your strength**
- Luke 10:27 He answered, “Love the Lord your God with all your heart and with all **your soul** and with all **your strength** and with all **your mind**”; and, ‘***Love your neighbor as yourself.***”’

HOLISTIC
APPROACH

APPLICATION

PERSONAL
JOURNEY

HOLISTIC IN ACTION

- *Integrating wellness and empowerment.*





NEXT STEPS

EMBRACE, EDUCATE, EQUIP, EXECUTE!